



presents

Home Land

By NZ playwright Gary Henderson

17-31

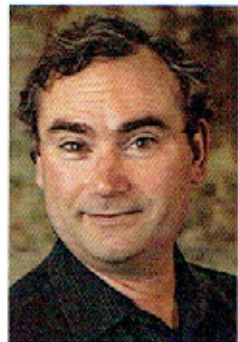
August

*"The only thing
I understand is
out that window"*

Directed by Sian Davis

Rose Centre, Belmont





Welcome

from Stephen Hood
President of COMPANY THEATRE

Thanks for coming along to see *Home Land*, the middle play of Company Theatre's 2024 season at the Rose Centre - preceded in May by Suzy-Sampson-directed *The Curious Incident of the Dog in the Night-Time*, and to be followed in November by Tim Firth's black comedy *Sheila's Island*. Its director, Kathy Gent, is returning with this all-female version of *Neville's Island* after the earlier play's August 2021 run was cut painfully short due to a virus that shall not be mentioned.

Sian Davis - a veteran director, actor & of the arts in general - has carefully crafted the brilliantly realistic writing of Gary Henderson's *Home Land* into a subtly but sometimes overtly moving testament to the changes & challenges in life that might seem routine and everyday to outside observers, but are earth-shattering for those caught in the middle of them. The cast joins Sian in exploring the usually masked and always deeply raw emotion underpinning the three days of 80-year-old Ken's life that we see in the play - in which his life is irreversibly changed forever.

About the Director Sian Davis



Sian's involvement with theatre, amateur and professional, long predates her history with Company Theatre. It starts in NZ in the 60s in the Taihape Town Hall, performing in some Whitehall farce she'd probably like to forget (fun at the time, but!). A seminal period was her involvement with Theatre Corporate in 1974. After a long involvement with the stage as an actor, Sian turned to directing in 1998. Since then, she has worked mostly on the North Shore. COMPANY THEATRE was the first theatre game enough to give her a 'shot' at directing with its production of *Hedda Gabler* in 1998. Subsequently thirteen other shows have followed at The Rose Centre. Sian's more recent directorial roles for Company Theatre include the production of *Cat on A Hot Tin Roof* by Tennessee Williams in 2021 and Arthur Miller's *Death of a Salesman* in 2023.



Thoughts on the Play

from Sian Davis
DIRECTOR

Homeland received its first production at the Fortune Theatre, Dunedin, in 2004. This will be the play's first showing in the North Shore.

The play is set on a South Otago hill-country farm in the Winter 2003. Ken has farmed this land all his long working life. He is an 80-year-old widower, virtually crippled and now totally reliant on his son and daughter-in-law for running the farm and tending to his needs. His daughter, son-in-law and granddaughter arrive from Auckland for this, his last weekend on the farm that has been his whole world.

Homeland has been a delight to explore, in the strength and realness of its characterisation and circumstances, and in the subtleties of its beautifully nuanced dialogue: so much of this play lies beneath the surface. I offer my profound respect and thanks to the actors for their commitment to that process of exploration and a hope that it has been as satisfying for them as it has been for me.

The Cast

<i>Ken Taylor</i>	<i>Max Golding</i>
<i>Graeme Taylor</i>	<i>Mark Jensen</i>
<i>Trish Taylor</i>	<i>Chloe Smith</i>
<i>Denise Mason</i>	<i>Kate Watson</i>
<i>Paul Mason</i>	<i>Andy Schmidt</i>
<i>Sophie Mason</i>	<i>Madeleine Park</i>

ACT 1

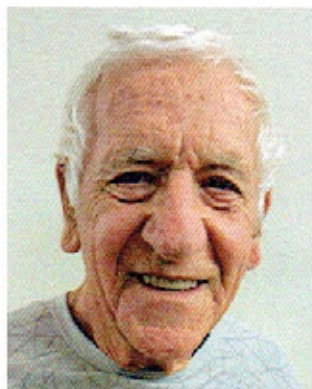
INTERMISSION

ACT 2

There will be ONE INTERMISSION of 15 minutes
Refreshments, ice cream and a variety of drinks will be available.



Meet the Cast



MAX GOLDING
Ken Taylor

Max first joined Company Theatre for the role of Arthur Wicksteed in *Habeus Corpus* (1992), a special Company Theatre production for the opening of The Rose Centre itself. He's enjoyed performing in many Roger Hall plays for Company - as Reg in *Spreading Out*, Adrian in *Four Flat Whites in Italy*, Alan in *Who Wants To Be 100*, and Gary in *Last Legs*: the last two of which were directed by Sian Davis. And he's played different characters in the same

Roger Hall plays at other venues around Auckland! Max directed the 2016 Company Theatre production of *When Dad Married Fury* by Australian playwright David Williamson.



Mark Jensen
Graeme Taylor

Mark has previously appeared for Company in *When Dad Married Fury* by Roger Hall (2016), *One Man Two Guvnors* by Richard Bean (2016), and then in the 2017 production of Anthony McCarten's *Weed*. As a school teacher by day, he performed in the school production of Eugene Ionesco's comic drama *The Lesson* in 2020 and enjoyed it very much.





Chloe Smith *Trish Taylor*

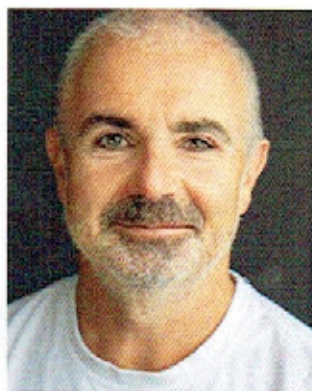
Chloe is a Performing Arts teacher for an Intermediate School in Auckland on the North Shore. Prior to being a teacher, she worked behind the scenes at TVNZ for the *Breakfast Show*. Her passion in drama has seen her land roles in shows at The Rose Centre and Centre Stage. Some of the shows include *All My Sons*, *Deathtrap*, *A Streetcar Named Desire* and *The History Boys*. She also directs an annual performance on stage at the Aotea Centre for NZ's

biggest student drama and dance show called '*Showquest*' in which her entries have placed 1st in Auckland for 3 years in row.

Kate Watson *Denise Mason*

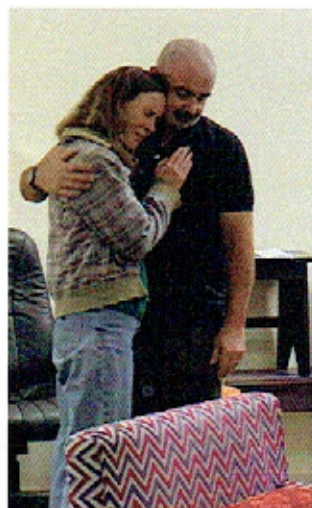
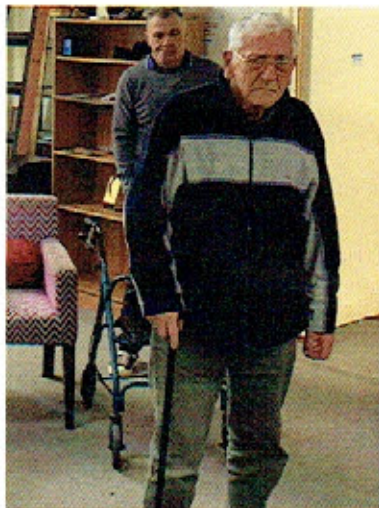
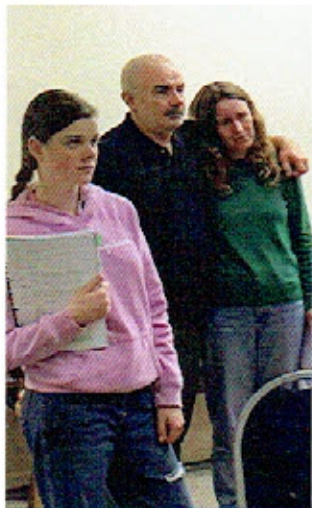
Kate is an Auckland-based actor/writer who has been performing since her University days. Her rom-com *Hawaiian Pixie* was produced by Titirangi Theatre in 2007 and she wrote, co-produced and performed in the dark comedy, *The Cave* in 2015. As an actor, Kate is often drawn to plays with smaller casts that require actors to delve deeply into their onstage relationships to tell relatable stories such as this. This is Kate's first play with Company Theatre, having last performed as hoarder Marlene in the 2022 Auckland Fringe production *Swallow the Fly*.



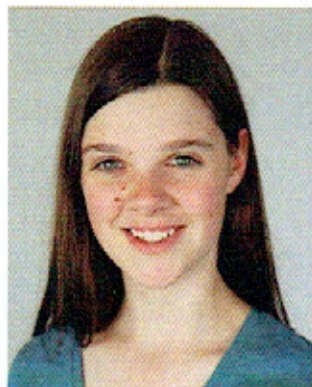


Andy Schmidt *Paul Mason*

This is Andy's first production acting with Company Theatre, and his second with Sian directing. He is excited to be working on a quintessential Kiwi story but one that will resonate with all cultures, and he has been in Paul's shoes before (although not as a sports broadcaster sadly!) Andy is represented by LBF Actors.



Madeleine Park *Sophie Mason*



Madeleine is thrilled to return for her second production directed by Sian Davis at Company Theatre, after playing the role of Dixie in *Cat on a Hot Tin Roof* in 2021.

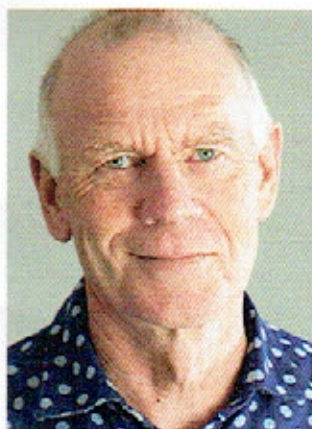
Other stage experience includes Marcy Park in *The 25th Annual Putnam County Spelling Bee* (St Cuthbert's College), Marta von Trapp in *The Sound of Music* (Harlequin Theatre) and shows with NYT. In her spare time she enjoys screen acting, singing, knitting, and completing her Gold Duke of Edinburgh Award. Madeleine's really looking forward to working with the talented cast and team at Company Theatre!

The Crew

Director	Sian Davis
Production Manager	Stephen Hood
Production Assistant	Sherry Ede
Stage Managers	Lucus Laurent, Janet Lyons
Stagehands	Kate Finlay, Emma Arwanitis, Emily Smith
Set Design	Sian Davis, Scott Thomas
Sound and Lighting Design	Scott Thomas
Sound and Lighting Operation	Stephen Hood
Set Painting	Sian Davis, Caroline Parker, Kate Finlay, Victoria Park, Jesse Park
Set Construction & Dressing	Scott Thomas, Sian Davis, Stephen Hood, Alastair Fletcher, Sherry Ede, Vettinia Ross, Janet Lyons, Lucus Laurent, Kate Finlay, Emily Smith, Andrew Park
Properties	Vettinia Ross, Sherry Ede, Sarah Dettwiler
Costumes	Victoria Park
Costume Advisor	Cathie Sandy
Poster & Billboard Design	Stephen Hood
Programme	Sherry Berg
Social Media & Advertising	Stephen Hood
Website & iTicket	Sherry Ede
Billboards	Alastair Fletcher, Stephen Hood
Box Office	Sherry Ede, Sarah Dettwiler
Bar Manager	Alastair Fletcher
Front of House Manager	Lesley Hawkey
Rehearsal and Show Photos	Victoria Park, Sherry Ede, Stephen Hood

The Playwright

Text and photo courtesy of the Playmarket website



Gary Henderson was born in Geraldine in South Canterbury, and gradually spiralled his way north to Auckland where he has lived since.

Gary's plays have been professionally produced around New Zealand, in South Africa, Australia, Great Britain, Canada and the United States. His most well-travelled play is *Skin Tight* which won a coveted Fringe First Award at the Edinburgh Fringe in 1998 during a sell-out season at the Traverse Theatre. Productions have been produced in New York since 2006, UK since 2007 and Canada since 2008.

Gary received a Fringe Award for Excellence for *The Big Blue Planet Earth Show* at the Adelaide Fringe Festival in 1992, and a Chapman Tripp Theatre Award for the best new short play in 1996 for *Mo & Jess Kill Susie*.

Home Land, commissioned and produced by Fortune Theatre in Dunedin (2004) and *Peninsula*, commissioned by the Christchurch Arts Festival and directed by Gary at The Court Theatre (2005), were written in Dunedin while Gary was resident in the Robert Lord Writers Cottage, and teaching at Allen Hall, the home of the Otago University Theatre Studies Programme.

Other commissions include *Lines of Fire* for Wow! Productions, a site-specific work presented at the Dunedin Railway Station in the Dunedin Festival of the Arts 2006; *Stealing Games* for Capital E National Theatre for Children; *My Bed My Universe* for Massive Company; *Shepherd and The Breath of Silence* for The Court Theatre Christchurch, and *Things that Matter* for Auckland Theatre Company.

Gary has also directed the work of other New Zealand playwrights and has also served many times as a director and mentor in the development of scripts by new writers. From 2006 - 2012 Gary taught playwriting at Unitec's School of Performing and Screen Arts in Auckland and still teaches independently.

Gary was the 2013 recipient of the Playmarket Award, a \$20,000 prize recognising a playwright who has made a significant artistic contribution to theatre in New Zealand.

Thank you to our sponsors



Ian **Cunliffe**

Sales & Marketing Consultant

M: (027) 227.9322

www.cooperandco.co.nz

Harcourts Cooper & Co

Cooper & Co Real Estate Ltd Licensed REAA 2008



ROWLEY
FUNERALS

Call us any time
09 445 9800

16 Anne Street Devonport Auckland 0624 | Email: info@rowleyfunerals.co.nz | www.rowleyfunerals.co.nz

Acknowledgments

*In assisting with the production of this play,
a warm THANK YOU to:*

The Rose Centre

The Devonport Clay Store

Stephen Dil

Hospice Shop, Devonport

New World, Devonport

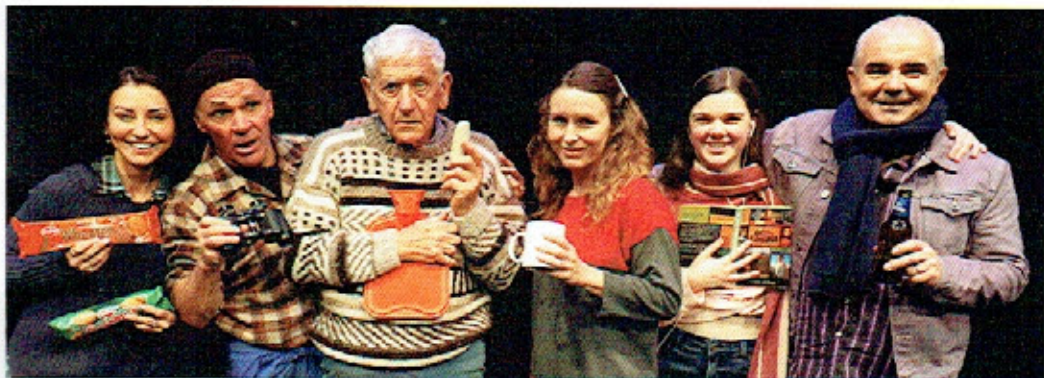
Uglys Community Pantry

Resource Recovery, Devonport

Paddy Stafford-Bush

and

The volunteers who look after front of house



COMPANY THEATRE
presents



Tim Firth's

SHEILA'S ISLAND

Directed by
Kathy Gent

A Comedy in thick fog



16-30 NOV
2024

ITICKET



Bonfire night 2019, Sheila, Denise, Julie and Fay are Team C in Pennine Mineral Water Ltd.'s annual outward-bound team-building weekend. Somehow, Sheila has been nominated team leader, and, using her cryptic crossword solving skills, has unwittingly stranded her team on an island in the Lake District.