

WELCOME

from Stephen Hood

PRESIDENT OF COMPANY THEATRE

Company Theatre welcomes the return of powerhouse director Kathy Gent for her fourteenth time in this role with our theatre company. Steel Magnolias stars six women – with the only occasional male voice on stage being a radio DJ – and is a play for those who appreciate strong, well-written characters who face their difficulties with good humour and grace under fire. This

November sees Reg Williams directing George Bernard Shaw's Arms and the Man, and we can't wait to tell you what we have in store for 2020!

THOUGHTS ON THE PLAY

from Kathy Gent

DIRECTOR OF 'STEEL MAGNOLIAS'

I love that this play takes place in a beauty salon. It's the place where we women go when we need a lift. At least when I go in there, that's what I hope will happen. My hairdresser knows me pretty well. I sit in her chair, she puts a cape on me, and not only does she whip my hair into shape, she talks to me and we share a lot, or at least gain a perspective on the problems in our own lives. A lot of times we laugh. When she's finished working her art, she takes off my cape and I rise from my chair leaving parts of myself on the floor. I leave some emotional stuff there too; she sweeps it all away and I leave revived.



A salon is a potent place for Robert Harling to have set his story, his story about the women he grew up with, mainly his sister. He furiously wrote this play in 10 days, because he wanted "somebody to remember her." The play is from the heart; he took his feelings and memories and formed them into something we could all relate to: love, family, friendship, womanhood, sisterhood, death. In interviews, Robert Harling talked about what he noticed in the women in his family. He noticed they held together when the men around them broke down. He noticed they were different when they were just with each other. He said, "When I was a kid, the mystique of the beauty parlour was that guys were never allowed in. You didn't know what went on in there, and they all came back different somehow." He sensed that important changes were taking place in their private spaces together that helped them be strong.

THE CAST

Truvy *Liz Cannon*
 M'Lynn *Fiona Hall*
 Annelle *Grace Chisholm*
 Shelby *Rebekah Talsma*
 Ouiser *Linda Pudney*
 Clairee *Marion Dixon*
 KPPD DJ *James Carrick*

THE SETTING

The action of the play takes place in Truvy's Beauty Salon in the small-town of Chinquapin, Louisiana over the course of three years in the mid to late 1980's.

Act 1 Scene 1 - April 1985
 Act 1 Scene 2 - December 1985

Act 2 Scene 1 - June 1987
 Act 2 Scene 2 - November 1987



KATHY GENT
Director of Steel Magnolias

This is the fourteenth play that Kathy has directed for **Company Theatre**, with themes amongst all of her productions being ones of comedy, camaraderie and collaboration. Previous box office successes have included **Ladies Day, One Man Two Guvnors, Fawltly Towers, Calendar Girls, Brassed Off** and **'Allo 'Allo**. Kathy absolutely loves directing comedies, especially plays with strong characters and just a touch of melancholy. Before arriving in New Zealand and more specifically in Devonport, she directed revues, plays, pantomimes and musicals for companies in Sheffield, Leicester, Portsmouth and London with all-time favourites being **Cabaret** and **Stepping Out** (at Wimbledon Theatre).

As she arrived at **Company Theatre** in August 1995, they were performing **Steel Magnolias** and since then she has loved the play, an evergreen classic that provides wonderful opportunities for actors to explore characters and relationships as they develop in times of joy and of grief.

LOCAL EXPERIENCE LOCAL KNOWLEDGE
 Over 25 years combined experience selling property in Devonport and surrounding areas.



Barfoot & Thompson
 carolwetzell.com

Carol Wetzell 0800 248 257
 c.wetzell@barfoot.co.nz

Ian Cunliffe 0800 248 521
 i.cunliffe@barfoot.co.nz

barfoot.co.nz

Southern Hair


A SPECIAL SUBSCRIPTION OFFER TO READERS OF

Southern Hair

A YEARS WORTH OF READIN'
 FOR THE LOW PRICE OF

\$15.95!

OFFER INCLUDES A CASE OF AQUA NET TO KEEP THOSE BOUFFANTS HIGH AND MIGHTY! GET 'EM WHILE STOCKS LAST! VISIT YOUR LOCAL BEAUTY STORE AND SIGN UP TODAY!



Marmillion MILLS
For the finest plywood money can buy!



CHINQUAPIN PARISH GAZETTE
Have we got news for YOU!

5c Wednesday 17 April 1985

Truveys BEAUTY SALON
HELP WANTED!





Janice van Meter shortly before the offending flyball incident

MAYOR'S WIFE HURT IN DEDICATION CEREMONY

The Mayor of Chinquapin's wife, Janice Van Meter, was hit with a baseball at the dedication of the new children's park. She did not appear to be too badly injured, and when asked, the widow of the former mayor, Mrs Clairee Belcher, reassured us that Mrs Van Meter could not have been badly hurt.

CHINQUAPIN DEVILS WIN AGAIN!



The Chinquapin Devils High School Football Team continued their winning streak with a 7 to 6 victory over old rivals Alexandria this week. The continuing controversy over their game has been dismissed by coach Waddy Thibodeaux.

MONROE FIRST PRESBYTERIAN CHOIR



*Presents...
A Programme of
Mozart
and Handel*

TENOR SOLOIST: OWEN JENKINS

JESUS INSPIRATIONAL SPORTS STATUES

Handpainted resin statues on a real wood base are the perfect gift for every young Christian athlete. These statues present Jesus as a friend in everyday sporting activities. As sponsored by the Reverend Q T Bennett of the Riverview Baptist Church. Join his protest against the demonic mascot of our high school football team by purchasing a Jesus Sports statue - play sport with Jesus, not with the Devil. All sports available.



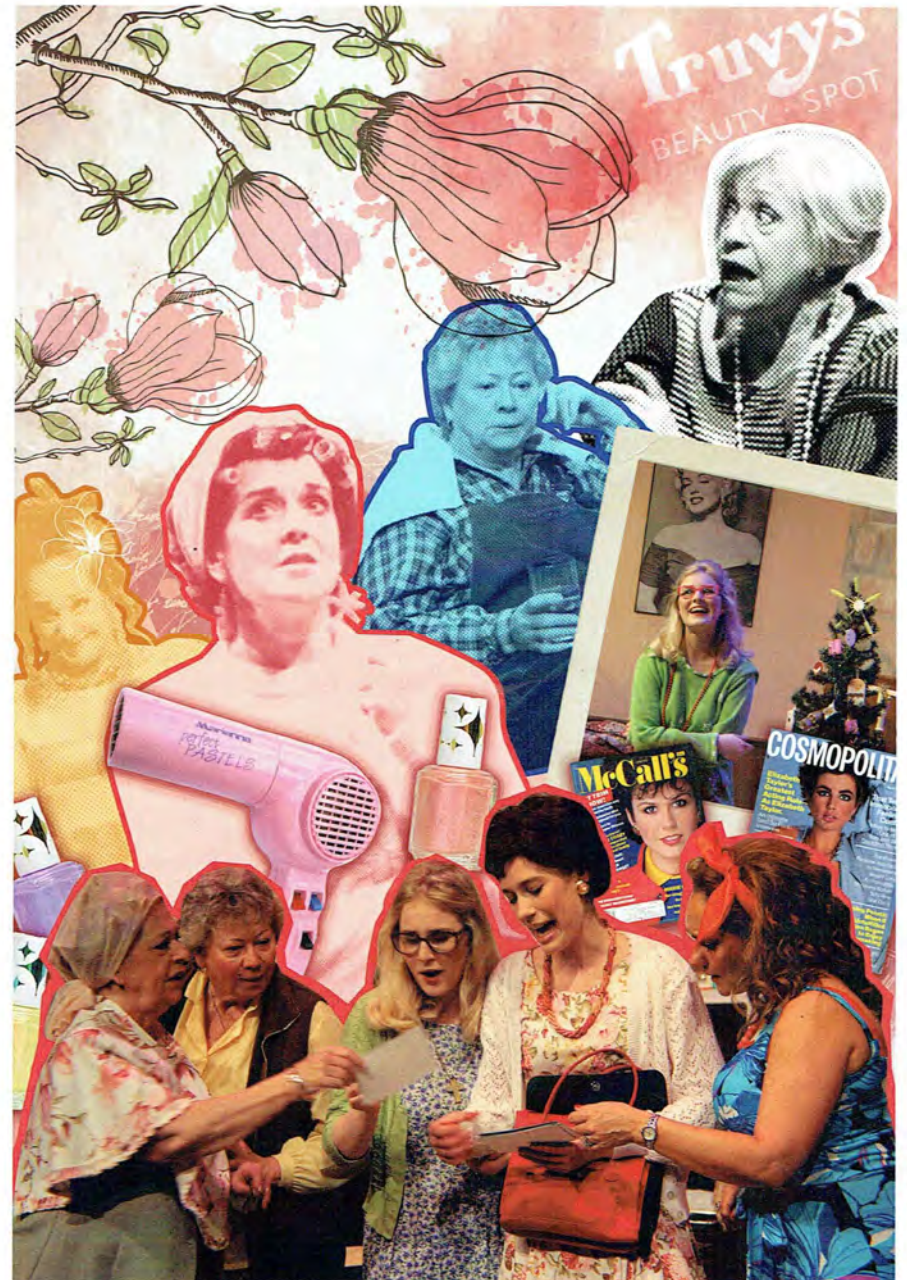
KPPD
THE STATION OF CHOICE IN CHINQUAPIN PARISH

LIVE IN CONCERT!



IN ASSOCIATION WITH **Rick's Track Lighting**

SINGLE BULLET THEORY



MEET THE CAST



MARION DIXON

Marion's first show was *Showboat* - which was The Auckland Operatic Society's Golden Jubilee production in 1969! Marion was a member of the Auckland Music Theatre touring company and worked with many musical theatre groups around Auckland such as North Shore and Howick. Study and business intervened; however, in 2018, Marion returned to theatre playing Cora in Centrestage's production of *Calendar Girls* for which she was nominated for a NAPTA award as lead actress. Marion is

delighted to have found another great part in Clairee and the story of *Steel Magnolias*.



LINDA PUDNEY

Linda has been treading the boards in Auckland for... well ages really! These include musicals, comedies & dramas at The Dolphin, Stables in Ellerslie, Titirangi Theatre, Playhouse Theatre, Waiatarua & Waitemata Theatres. She has even turned her hand to directing on occasion which is another theatrical challenge she looks forward to doing more of in the future. Earlier this year Linda appeared in the Dolphin production of *Arsenic & Old Lace*, however, this is her first time at Company Theatre. *Steel Magnolias* is a particular favourite as she was in Waiatarua Theatre's production in the role of M'Lynn. Ouiser is such an interesting character that she is really loving getting into. Linda is also really enjoying all the lovely company & new friends at Company Theatre.



FIONA HALL

This is Fiona's ninth play since returning to the stage in 2013 after a long absence, during which time she managed the real-life dramas that invariably accompany a career in the law and three children. It is her first production with Company Theatre, having previously appeared at Dolphin and Howick Little Theatre, most recently in February in Neil Simon's comedy *California Suite*. She has loved being part of this wonderful production, sharing the stage with such an amazing and talented group of women

and working alongside such a dedicated director and crew.

Steel Magnolias holds a special place in her heart, the film having been the catalyst as a young mother to start writing a journal for her daughter, and so Fiona feels particularly privileged to have the opportunity to bring M'Lynn to the stage and hopes the audience love her story as much as she does.



LIZ CANNON

Liz Cannon has been treading the boards for 40 odd years, her debut being the back end of the Nativity Donkey back in the '70s! She's come a long way since then, recently as Maria in *Twelfth Night* (Shoreside Theatre 2019), Dolly in *One Man Two Guvvors* (Company Theatre 2016) and Cora in *Calendar Girls* (Company Theatre 2013) and lots of stuff in between. Full time Mum of four, full time Sales and Marketing Manager for the Devonport Flagstaff and Rangitoto Observer publications, part time traveller and party-girl - lover of life in general! Liz gives her all to whatever hair-brained scheme (get it!) she finds herself in and invites you to laugh, cry and enjoy.



REBEKAH TALSMAN

This is Rebekah's second production with Company Theatre after playing Cecily in *The Importance of Being Earnest*. Some of her favourite roles to date include Hermione in *Lovepuke* (2019), Helen in *The Iliad* (2018), Lady Windermere in *Lady Windermere's Fan* (2017) and Lucy in *Dracula* (2017). She has just finished playing the role of Jackie in *Shoreside's Murder on the Nile* and is excited to follow in the footsteps of Julia Roberts in playing Shelby. Coincidentally, her first job was as a hairdresser's assistant in a converted salon.



GRACE CHISHOLM

This is Grace's second production with Company Theatre, having performed in *Popcorn* (Company 2018) last year. Just this year she has had the pleasure of performing in *42nd Street*, Belle in *Beauty and the Beast* and is soon to begin rehearsals for *The Addams Family Musical*. Grace hopes to continue performing and studying theatre in 2020. She has loved the process of making this wonderful play come to life with the company.



CREW FOR STEEL MAGNOLIAS


- Director: Kathy Gent
- Assistant Director: Catherine Maunsell
- Stage Manager: Jan Judson
- Assistant Stage Manager: Annie McGrath
- Production Assistant: Sherry Ede
- Director's PA and Rehearsal Prompt: Victoria Silvey
- Set Design: Scott Thomas
- Set Construction: Max Golding, Scott Thomas, Tony Sandy, James Carrick, Dave Best, Stephen Hood
- Props: Kathy Gent
- Hairdressing Advisor: Carol Tollafield
- Set Dressing: Anne Rimmer
- Set Painting: Caroline Parker, Tony Sandy, Steve Wright, Maureen Kenny
- Lighting Design: Scott Thomas
- Sound Design: Kathy Gent, Scott Thomas
- Lighting & Sound Operator: Stephen Hood
- Wardrobe: Cathie Sandy, Janet Lyons
- Hair: Gail Carran, Cathie Sandy, Jos Diver
- Stage Crew: Victoria Silvey, Sofie Gabriel, Sarah Dettwiler
- Graphic Design: Hayley Atkins
- Publicity: Kathy Gent, Sherry Ede, Katie Vincent
- Billboards: Alastair Fletcher, Sherry Ede
- Photography: James Carrick, Sofie Gabriel
- Dialect Coach: Mackenzie Miller
- Front of House Manager: Lesley Hawkey
- Bar Manager: Alastair Fletcher

Chinquapin Recipe Corner
 Favourite recipes from the readers of the Chinquapin Parish Gazette! Try one today!

Robelina's Strawberry Pie

1 Pint fresh strawberries, hulled and sliced
 3/4 cup sugar mixed with 1 teaspoon ground cinnamon
 2 cups chopped walnuts
 Two 9 inch unbaked pie shells

Toss the strawberries with the sugar and cinnamon mixture in a medium-size mixing bowl and let it sit, covered, in the refrigerator overnight. Toast the walnuts in a skillet over a medium fire until they begin to brown. Preheat the oven to 400 degrees. Divide the strawberries between the pie shells and sprinkle the walnuts over the top of each. Place the pies in the oven for 5 minutes, then lower the oven temperature to 325 degrees and bake for 30 minutes. Let cool, then place in the refrigerator overnight before serving.

THANKS TO
 A special thank you to the volunteers who look after front of house. Thank you to our major sponsors Barfoot & Thompson Devonport and Rowley Funerals. Thank you to The Rose Centre.



There will be
ONE INTERVAL
 of 15 minutes
 Refreshments,
 Ice Creams, Chocolates and
 a variety of drinks will
 be available





Brand new show apartment open to view!

Come and view our fabulous show apartment and see what a Ryman village has to offer.

We have plans available for one, two and three-bedroom apartments, some with views of the Sky Tower, Harbour Bridge or Mt Victoria/Takarunga.

These stunning homes are priced from \$670,000.



For more information phone Janet or Mark on 445 0909
7 Ngataringa Rd, Devonport



NEXT WITH COMPANY THEATRE

Our upcoming show 16-30 November 2019

See companytheatre.co.nz for details



ARMS AND THE MAN

BY GEORGE BERNARD SHAW

DIRECTED BY REG WILLIAMS



A CLASSIC COMEDY FROM 1894

Call us any time 09 445 9800



ROWLEY
FUNERALS

16 Anne Street Devonport Auckland 0624 | Email: info@rowleyfunerals.co.nz | www.rowleyfunerals.co.nz



Taken from the 40th Anniversary Book compiled by Scott Thomas



Packout -and it all comes down

