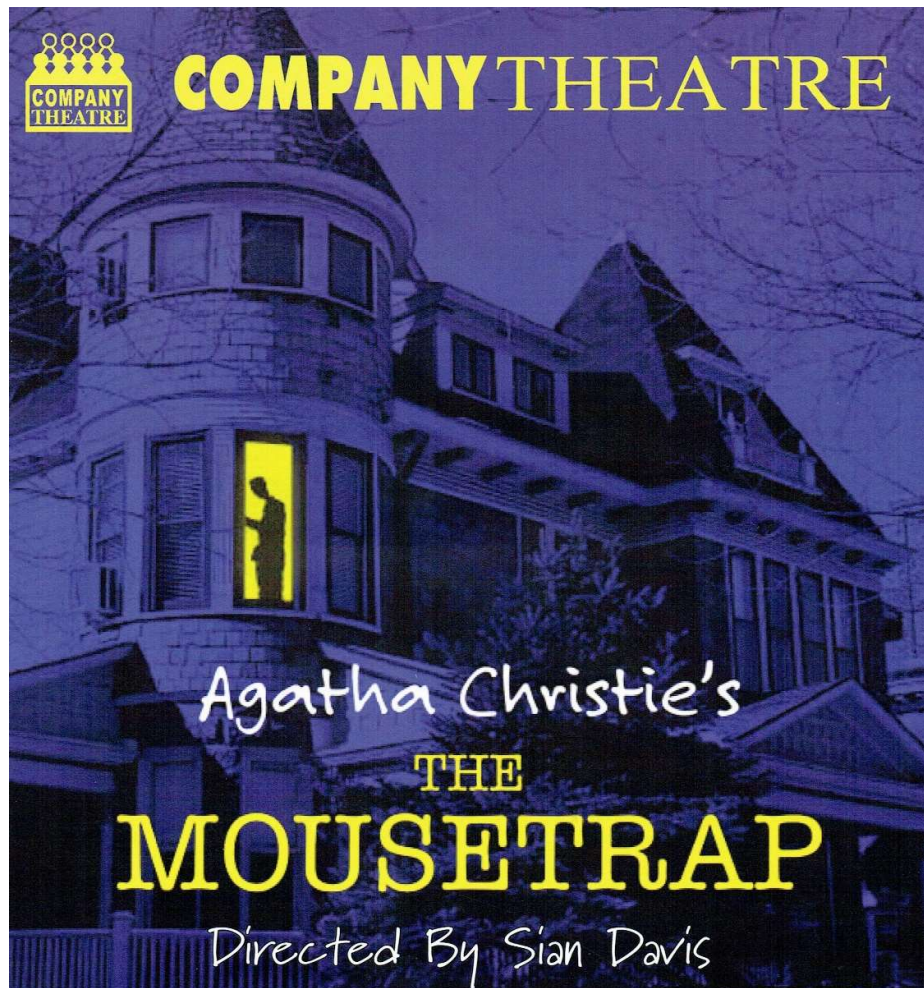


DIRECTOR'S NOTES



COMPANY THEATRE



Agatha Christie's

THE
MOUSETRAP

Directed By Sian Davis

10th – 24th November 2012

Weds - Sat 8pm, Sundays 2pm

The Rose Centre, School Road, Belmont

www.companytheatre.co.nz

Welcome to Monkswell Manor! It is a building with history, although its cellars are all that now remain from its earliest days as a monastery. Today is the first of its latest guise as a 'guesthouse'. It is the early 1950s, winter, and the surrounding Berkshire hills are fast being blanketed by snow. Anxiously awaiting their first, and unknown, guests are Mollie and Giles Ralston, only one year married after a brief courtship and maybe not that sure of each other. As the afternoon draws on the guests will assemble. Some have booked, others will come unexpected and the law requires the housing of weather be-devilled travellers. After they settle in, the stressed Mollie will offer the nervous comment to her Giles, "All our guests are unpleasant or odd". But at least they are safe in the country, insulated from the evils of the outside world of bloody murder and the radio will keep everyone posted on 'developments'. However this is a murder mystery so Mollie is likely to endure even more stress before the play's end - assuming she makes it!

Here it is then, 'The Mousetrap', a time-honoured classic, and almost a 'must-see' for several generations of 'OE' Kiwi voyagers to the UK.... in fact over 60 years worth of them. Incredible! It premiered on the West End in late 1952 and is still running there. Think you saw the movie? Wrong! It has never been filmed. The stage producers secured the production rights with a guarantee that no film would be produced until 6 months after the end of the run! And it's still running. Of course, you might just remember the earlier BBC radio drama back in 1947.

The play opened to rave reviews: "The cleverest murder mystery ever written for British Theatre" the Daily Telegraph reported. Since then more than 10 million theatre goers have seen it, making it the longest running show (of any type) in the world. And now, to mark its 60th, at long last the rights to perform have been made available around the world.....for 12 months only, and then the rights will be locked away. Incidentally, Agatha Christie gave those rights to her nephew as a birthday gift! And incidentally again- traditionally, audiences are asked not to 'blab' after leaving the theatre about the play's 'twist-ending'!

'Setting the trap' has been my job for the past number of weeks. Now I have to admit to a much increased respect for the very clever Miss Christie and I have to say how much I've very much enjoyed the process and, of course, the company of all the lovely and talented actors and back-stage folk who have so willingly gone along with me.

Sian Davis, Director

SYNOPSIS OF SCENES

ACT I

Scene 1: The Great Hall at Monkswell Manor. Late afternoon

Scene 2: The same. The following day after lunch

ACT II

The same. Ten minutes later

Time: 1956

(There will be a 15 minute interval between Act I and Act II)

CAST IN ORDER OF APPEARANCE

CAST PROFILES

Mollie Ralston Gilles Ralston Christopher Wren Mrs Boyle	Claire Wingfield Jonathan Callinan Paul Roukchan Dianne Lamont	Major Metcalf Miss Casewell Mr Paravicini Det. Sergeant Trotter	Robert Campion Gemma Claire John Curry Reuben Turner
---	---	--	---

CLAIRE WINGFIELD

This is Claire's second outing with Company Theatre having recently played the part of the Nursing Sister in Fawly Towers. Claire has learnt a lot under the direction of Sian Davis and is really looking forward to playing Mollie Ralston, a character she thinks she would get on well with in real life. Claire has a long history of acting in community theatre in the UK; having played roles in several period dramas she is looking forward to the change of pace and costumes offered through a play set in the 1950s.

JONATHAN CALLINAN

This is Jonathan's first production with Company Theatre after recent roles in 'Find Me' at the Basement Theatre and 'Roleplay' at Ellerslie Stables. After performing in older plays such as 'Rebecca' (1940) and 'Inspector Calls' (1946) it has likewise been a rewarding challenge to be part of the world's longest running murder mystery classic. Taking on the role of Giles Ralston and his sarcastic persona has been an enjoyable and familiar experience.

PAUL ROUKCHAN

This is Paul's first time performing with Company Theatre - something he has been wanting to do for a while! With such a dedicated cast it's been his absolute pleasure to be involved with this Production - and he believes you will have an absolutely brilliant night. So strap yourselves in and get ready for The Mousetrap!

DIANNE LAMONT

There are two main reasons for Dianne's return for this production. Firstly the play – she saw this classic thriller nearly 50 years ago in London. Secondly the Director – Sian has directed Dianne in several productions. She says Sian is a creative and encouraging director who "shapes" a play so well. Interspersed with film and TV roles, this is Dianne's 11th appearance for Company Theatre, the last being in "Relatively Speaking" three years ago.

ROB CAMPION

Robert played 3 characters in the recent season of Fawly Towers which unlocked a passion in him for live theatre. He is thrilled to be involved with such a talented cast and crew in The Mousetrap. Seeing the energy and drive that Sian Davis has imbued in the cast is really inspirational for Robert and he is thoroughly enjoying playing the role of Major Metcalf.

GEMMA CLAIRE

The Mousetrap is Gemma Claire's first foray into theatre. She loves Agatha Christie's writing and is pleased to have this opportunity, under the insightful, constructive direction of Sian Davis. Gemma works as a health and disability advocate. In her spare time, she enjoys learning languages (Maori and New Zealand Sign Language), broadcasting on community radio (she has a spot on The Flea, 88.2 FM), and reading. She hopes to do more acting in the future.

JOHN CURRY

John would like to thank his French teacher of many moons ago, Mrs Mathews at Henderson High without whom this might not be happening! Thanks also to Sian and the friendly cast and crew for making Mousetrap such a pleasure. Thanks also to Company Theatre - it's good to be back!

REUBEN TURNER

Born in New Zealand, Reuben Turner has worked as a professional actor in Los Angeles, London and his native Auckland. Having trained in New Zealand and at the renown TVI Actors Studio in Los Angeles, Reuben has worked on a wide variety of projects. His breadth of experience includes lavish productions of musicals such as Cats, international commercials, screen work, children's theatre, music videos and stage drama.

PRODUCTION TEAM

Director	Sian Davis
Production Manager	Richard Parmée
Stage Manager	Lynne Davis
Production Assistant	Maxine Cunliffe
Set Design	Janet Williamson
Set Construction	Phil Davis with Richard Parmée, Scott Thomas, Tony Sandy
Set Dressing	Caroline Parker
Set Painting	Sian Davis, Janet Williamson, Caroline Parker, Tony Sandy, Anne Rimmer, John Gardner
Lighting Design/Operation	Scott Thomas
Sound Design	Sian Davis
Properties	Doreen & Fred Gould
Wardrobe	Cathie Sandy
Publicity	Kathy Gent, Richard Parmée, Sherry Ede
Poster Design	Richard Parmée
Photos & Billboards	Sherry Ede
Programme	Richard Parmée
Front of House Manager	Ruth Chapman
Bar Manager	Alastair Fletcher
Box Office, Front of House & Bar Staff	Members of Company Theatre

ACKNOWLEDGEMENTS...



Devonport Historical Museum, Fairview Village, Charles Paynter

COMPANY THEATRE MEMBERSHIP
Phone Richard on 445 9900 or email info@rosecentre.co.nz
www.companytheatre.co.nz



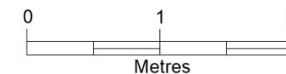
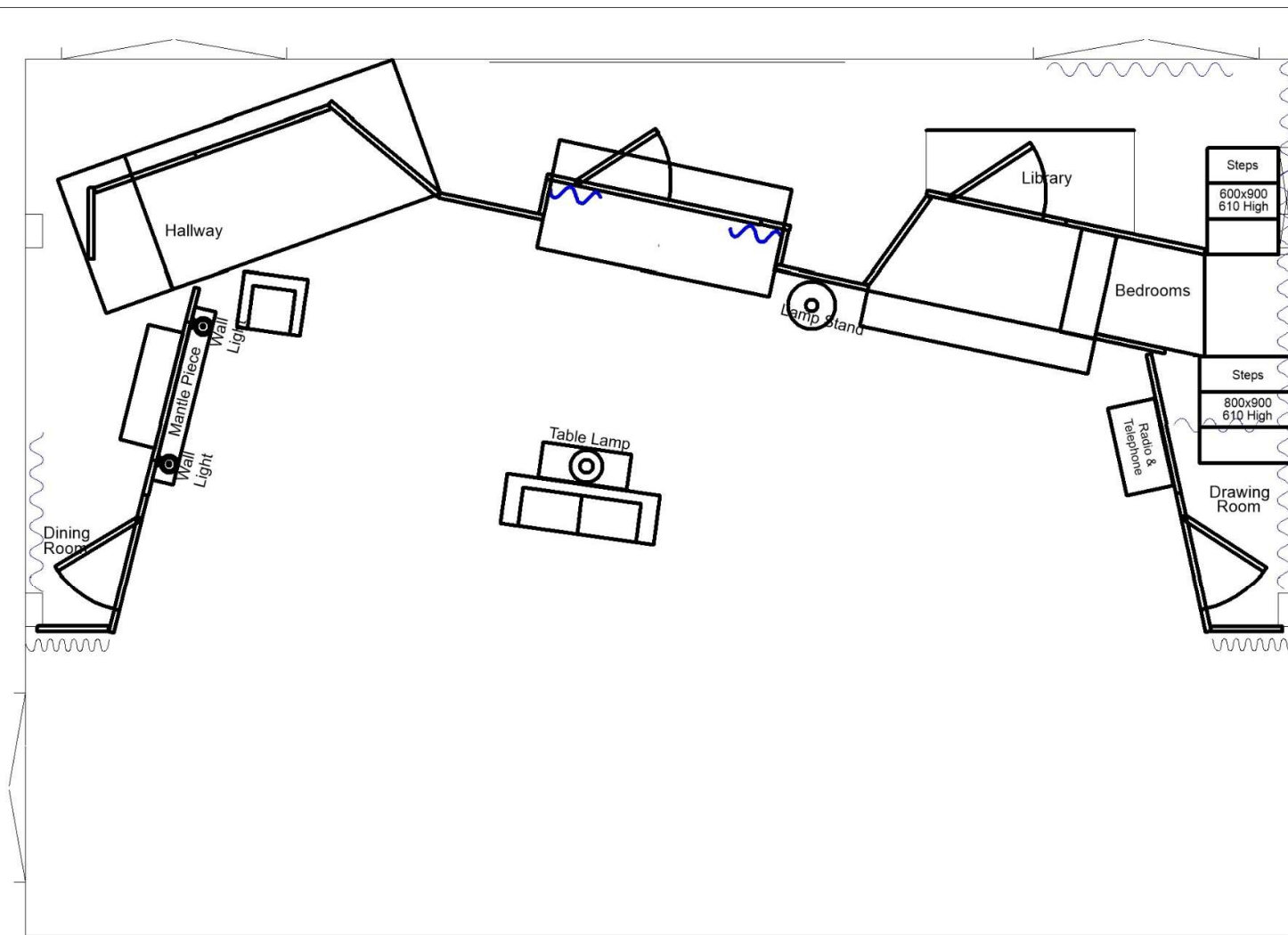


Set Design - Janet Williamson



Janet Williamson, painting above fireplace by Siân Davis





Event

THE MOUSETRAP

Director Sian Davis	Set Design Janet Williamson	Lighting Design Scott Thomas	Date 03.09.12
Producer Company Theatre Inc.	Performance 9-24 November 2012	Venue Rose Centre	Rev 1.1

Rare chance to see The Mousetrap: at the Rose Centre



Murder mystery with a twist... the cast of *The Mousetrap*

Company Theatre's next production at the Rose Centre is Agatha Christie's *The Mousetrap*, which premiered in London's West End in 1952 and is still running.

The play opened to rave reviews, such as the Daily Telegraph's report of it being, "The cleverest murder mystery ever written for British theatre." Since then more than 10 million theatregoers have seen it, making *The Mousetrap* the longest running show (of any type) in the world.

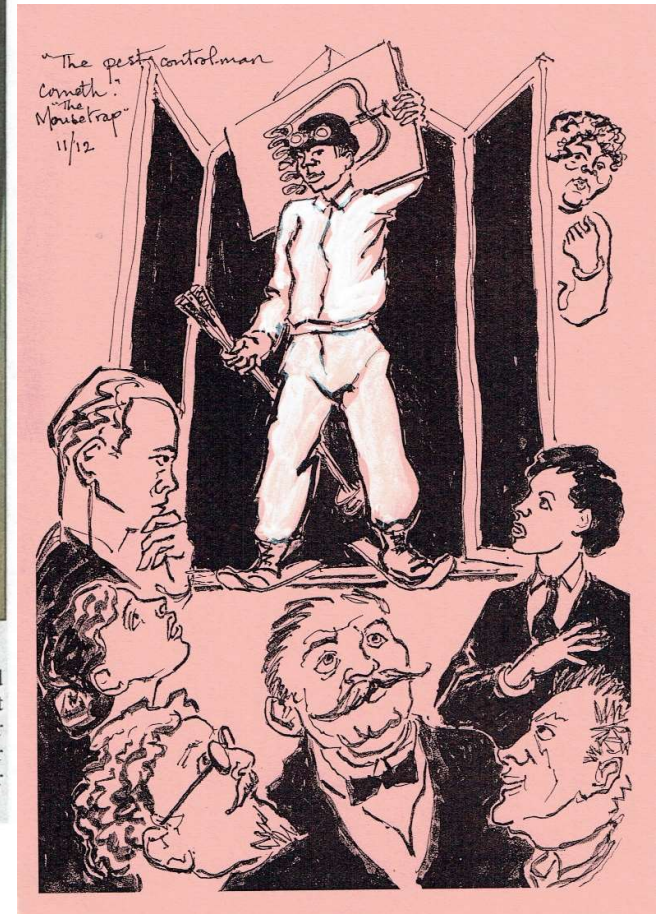
The Mousetrap has never been filmed as the stage producers secured the production rights with a guarantee that no film would be made until six months after the end of the run. However an earlier version of the play was broadcast as a BBC radio drama in 1947.

To mark its 60th year, the rights to perform it have, at long last, been made available around the world for a limited period of 12 months, after which time those rights will be rescinded.

Company Theatre's season of *The Mousetrap* runs from 10-24 November. Evening perform-

ances (Wednesday to Saturday) are at 8pm and there are afternoon performances on Sundays at 2pm. Tickets prices are \$25 for adults, \$20 for concessions (seniors and students) and \$15 for children. For bookings phone 09 445 9900 or email info@rosecentre.co.nz.

*Reuben Turner, Paul Roukchan, Robert Campion, Jonathan Callinan, John Curry
Gemma Clair, Dianne Lamont, Claire Wingfield*



Siân's thank you card for key helpers.