

COMPANY THEATRE

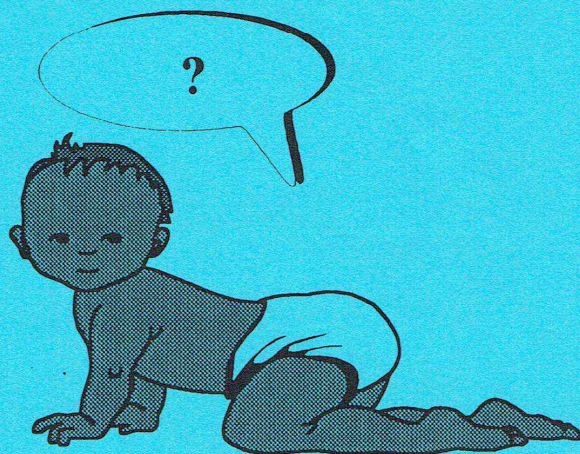
presents

MOTHERS AND FATHERS

by Joe Musaphia

Directed by Gordon Currie

An hilarious comedy about
surrogate parenthood



APRIL 16-30 1994
ROSE CENTRE THEATRE
SCHOOL ROAD, BELMONT.

Company Theatre*presents***MOTHERS AND FATHERS**

*A New Zealand Comedy
by Joe Musaphia*

Directed by Gordon Currie

CAST

John Palmer
Penny Skyrme
Annette Boyd
Cavan Boyle

The Director **Gordon Currie**

Gordon was introduced to "stardom" at an early age, when he played one of the ten little nigger boys, obviously before political correctness became an issue. But as this was at kindergarten perhaps he will be forgiven! Despite all that, he was then booked, sorry hooked, for life.

This is Gordon's second time as director for Company (**Middle Age Spread**, 1991), but over the many years since his kindy experience, Gordon has appeared in every type of theatrical role both back and on-stage.

For Company he first appeared in **Music Hall 1989**, then as the Dame, in the pantomime **Babes In The Wood**; an underwear appendage salesman in **Habeas Corpus** and most recently in the 1993 revue **Cowardy Custard**. Gordon has also worked with other Auckland companies, including North Shore Operatic and Howick Little Theatre (**Business of Murder**, 1992).

"I am delighted to direct a second time for Company Theatre, once again a New Zealand play. Company's policy to present suitable locally written plays is one I hope will continue. Tonight we offer you a light-hearted look at the problems caused by surrogate parenthood, as it was seen in the 1970's. As always, Company Theatre has assembled an enthusiastic cast and crew, making my job as director that much easier. Thank you for your attendance and I hope you enjoy the entertainment as much as we have in presenting it to you." Gordon Currie.

The Cast

John Palmer
appearing as Bernard

This production of **Mothers and Fathers** marks the fifth year of John's association with Company theatre - his first appearance being as Ken Harrison in **Whose Life Is It Anyway?** in 1989. Since then he has been involved in some way with every production but one, mostly in an acting role but also as director of **Beside the Sea**, 1993.

John's acting career began as an adolescent **Macbeth** which he tells us was famous for each of the "tomorrows" being declaimed in a different octave! This was followed by two years with the Northland Players during which time he co-starred in the N.Z. Federation's **'Best One-Act Play'** in 1981. John has done a number of TV commercials and small acting roles in NZ television productions.

Cavan Boyle
appearing as Terry

Cavan Boyle is making a first appearance with Company Theatre following experience with a Theatre Education Group. Two plays covering drug addiction and Aids awareness were rehearsed, but a planned NZ wide tour had unfortunately to be cancelled due to a lack of funds. Cavan is currently a student and returns to the stage after a three year absence.

Annette Boyd
appearing as Geraldine

Also a newcomer to Company Theatre, Annette has always had an interest in acting. At the age of 7, she was a member of a drama group and performed in **Alice in Wonderland**, and **Snowwhite and the Seven Dwarfs**, among others. Annette continued her interest at secondary school and performed in the musical **Bye Bye Birdie**. After two years living in London, Annette returned to NZ and we are pleased to welcome her back to both the country and to amateur theatre.

Penny Skyrme
appearing as Sally

Penny has many years acting experience both at home and abroad. This included a period in Spain, where finding opportunities limited she began writing her own sketches and pantomimes in which to appear. This play is Penny's fourth appearance for Company Theatre and, for trivia collectors, the third in which she has had to be 'padded'! Several lunchtime theatre productions at the Pumphouse, and an active organisation role for Junior Company (who have also benefited from her writing talents) make up the rest of Penny's portfolio - not forgetting the production of three children.

*The Director and Cast
of
Mothers and Fathers*

From Left
John Palmer, Penny Skyrme,
Gordon Currie,
Annette Boyd and Cavan Boyle



*The Production Team
of
Mothers and Fathers*

Directed by	<i>Gordon Currie</i>
Designed by	<i>Gordon Currie</i>
Production Manager	<i>Neil Harrison</i>
Stage Manager	<i>Steven Green</i>
Assistant Stage Manager	<i>Trish Worrall</i>
Lighting Design	<i>Jeff Marsh</i>
Lighting Crew	<i>Martin Judge, Max Golding, Mark Pritchard</i>
Wardrobe	<i>Ros Clews</i>
Wardrobe Assistants	<i>Cathie Sandy Barbara Messenger</i>
Props	<i>Niki Hare, Cal Lovell</i>
Prompt	<i>Harmony May</i>
Set Construction	<i>Tony Sandy, Doug Bourke, Don Wrightson, Trish Worrall</i>
Photography	<i>Lyndall Frost, Moira Coote</i>
Publicity	<i>Lyndall Frost, Sherry Ede, Catherine Long, Yvonne Burgham</i>
Programme	<i>Sherry Ede, Neil Burgham</i>
Front of House	<i>Gillian Taylor, Shane Sweeting</i>

Acknowledgements:
Noel Sandy, Rod Capper, Mike Belcham, Garth Finch, Robert Langden.

Company Theatre News Update

Since moving to the Rose Centre Theatre in September '92, Company has performed three plays (Habeas Corpus, Beside the Sea, Map of the Heart) and one musical (Cowardy Custard.) We have also staged a one-act play (November Echo) as part of a one act play festival in 1992. In addition to this our Junior Company group has performed Starblaze, A Christmas Wish, The Princess and the Pea and Jack and the Beanstalk.

With any new venue, there is always an adjustment period. Not only in terms of what goes on out the back (mainly trying to sort and find room for twelve years of accumulated costumes, scenery, bits of wood and general paraphernalia,) but in learning how to both stage plays and act on a totally different performing venue from our former home in St Michael's Hall. However we believe we have managed to maintain both our sanity and, more importantly, our standards of performance and we now look forward to a period of stabilisation and bigger and better productions.

In order to ensure this happens, Company Theatre, for the first time, entered a play in the New Zealand Theatre Federation competition for 1993. This play was our November 1993 production entitled Map of the Heart (written by William Nicholson who also wrote the now famous movie 'Shadowlands'). We were thrilled to have Catherine Long awarded joint **Best Actress** award for her performance in the leading female role of this production. This recognition has given us the stimulus to try even harder to emulate her achievement in this and other categories in the future.

On the opposite page you will see our programme for the rest of 1994. We have decided to make this year one in which we concentrate on the lighter side, beginning with this current production. 1994 has been declared **'The Year of Comedy'** for Company Theatre.

The opportunities with which this wonderful facility in the Rose Centre has presented are greater than a group of our size and relative youth had any reason to expect and we are anxious to make the most of them. To do so we need, and can accommodate, a much larger membership, across all disciplines of theatrical endeavour. In order to see how many people are needed, in addition to the cast and director, take a glance at the list of those who worked on the production team for Mothers and Fathers. If you have any kind of urge to participate at any level at all, please get in touch with our membership secretary Betty Wrightson on 445.9680 who will be delighted to tell you a bit more about how you could join us.

Company Theatre Programme 1994

'The Year of Comedy'

Mothers and Fathers

by Joe Musaphia
April 16 - 30 1994

The Mad Mad World of Theatre A Special Comedy Variety Show

5 Performances Only
June 22 - 25 1994

Situation Comedy

by Johnnie Mortimer
*An hilarious new British Comedy
with all the fun and frivolity of farce,
but in a modern setting about two advertising executives.*
September 23rd - October 8th

Pardon Me, Is My Music Disturbing You?

An entertaining evening of Edwardian music and sketches.
Opening late November.